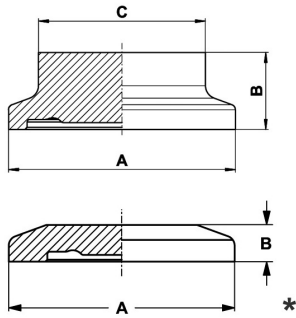


Aseptic-/Hygienic-Clamp pipe connection DIN 11853-3 + DIN 11864-3

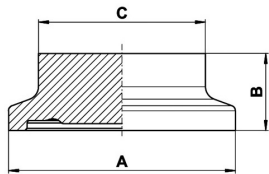
Art.No	EUR	Art.No	EUR

Clamp blind flange with notch DIN


DN	A	B	C			AISI316L-1.4404	AISI316L-1.4435		
10	34	11,5	25			476330	Enquiry	487030	Enquiry
15	34	11,5	25			476331	Enquiry	487031	Enquiry
20	50,5	11,5	42			476332	Enquiry	487032	Enquiry
25	50,5	11,5	42			476333	Enquiry	487033	Enquiry
32	50,5	11,5	42			476334	Enquiry	487034	Enquiry
40	64	11,5	54			476335	Enquiry	487035	Enquiry
50	77,5	13,5	62			476336	Enquiry	487036	Enquiry
65	91	13,5	78			476337	Enquiry	487037	Enquiry
80	106	13,5	93			476338	Enquiry	487038	Enquiry
100	130	13,5	115			476339	Enquiry	487039	Enquiry
125 *	155	12,5	-					487041	Enquiry
150 *	183	12,5	-					487042	Enquiry
200 *	233,5	12,5	-					487044	Enquiry
250 *	268	12,5	-					487046	Enquiry
300 *	319	12,5	-					487048	Enquiry

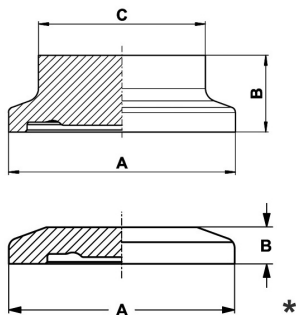
* Similar to DIN 11853-3

Blind ferrules DIN 11853-3 and DIN 11864-3 have the same dimensions.

Clamp blind flange with notch ASME


DN	A	B	C			AISI316L-1.4404	AISI316L-1.4435		
0,5"	34	11,5	25			497001	Enquiry	487101	Enquiry
0,75"	34	11,5	25			497002	Enquiry	487102	Enquiry
1"	50,5	11,5	42			497003	Enquiry	487103	Enquiry
1,5"	64	11,5	54			497004	Enquiry	487104	Enquiry
2"	77,5	13,5	62			497005	Enquiry	487105	Enquiry
2,5"	91	13,5	78			497006	Enquiry	487106	Enquiry
3"	106	13,5	93			497007	Enquiry	487107	Enquiry
4"	130	13,5	115			497008	Enquiry	487108	Enquiry

Blind ferrules DIN 11853-3 and DIN 11864-3 have the same dimensions.

Clamp blind flange with notch ISO


DN	A	B	C			AISI316L-1.4404	AISI316L-1.4435		
13,5	34	11,5	25			476429	Enquiry	487229	Enquiry
17,2	34	11,5	25			476430	Enquiry	487230	Enquiry
21,3	34	11,5	25			476431	Enquiry	487231	Enquiry
26,9	50,5	11,5	42			476432	Enquiry	487232	Enquiry
33,7	50,5	11,5	42			476433	Enquiry	487233	Enquiry
42,2	64	11,5	54			476434	Enquiry	487234	Enquiry
48,3	64	11,5	54			476435	Enquiry	487235	Enquiry
60,3	91	13,5	78			476436	Enquiry	487236	Enquiry
76,1	106	13,5	93			476437	Enquiry	487237	Enquiry
88,9	119	13,5	104			476438	Enquiry	487238	Enquiry
114,3 *	130	13,5	-					487239	Enquiry
139,7 *	155	12,5	-					487241	Enquiry
168,3 *	183	12,5	-					487242	Enquiry
219,1 *	233,5	12,5	-					487244	Enquiry

* Similar to DIN 11853-3

Blind ferrules DIN 11853-3 and DIN 11864-3 have the same dimensions.